



INDCON PROJECTS & EQUIPMENT LTD. **(FOR ENERGY EFFICIENT SOLUTIONS)**

Office : PLOT G-1, BLOCK B-1, MOHAN CO-OPERATIVE INDUSTRIAL ESTATE,
MATHURA ROAD, NEW DELHI - 110 004

Tel : 91 11 26959670/2699125557 **Fax:** +91 11 26959603 **E Mail :** indcon@indconprojects.com

Mumbai Office : B-3, J B Nagar, Andheri (E), Mumbai

Tel : 91 22 28321725 / 28224879 **Fax :** 91 11 28217404 **Mail :** indconmumbai@gmail.com

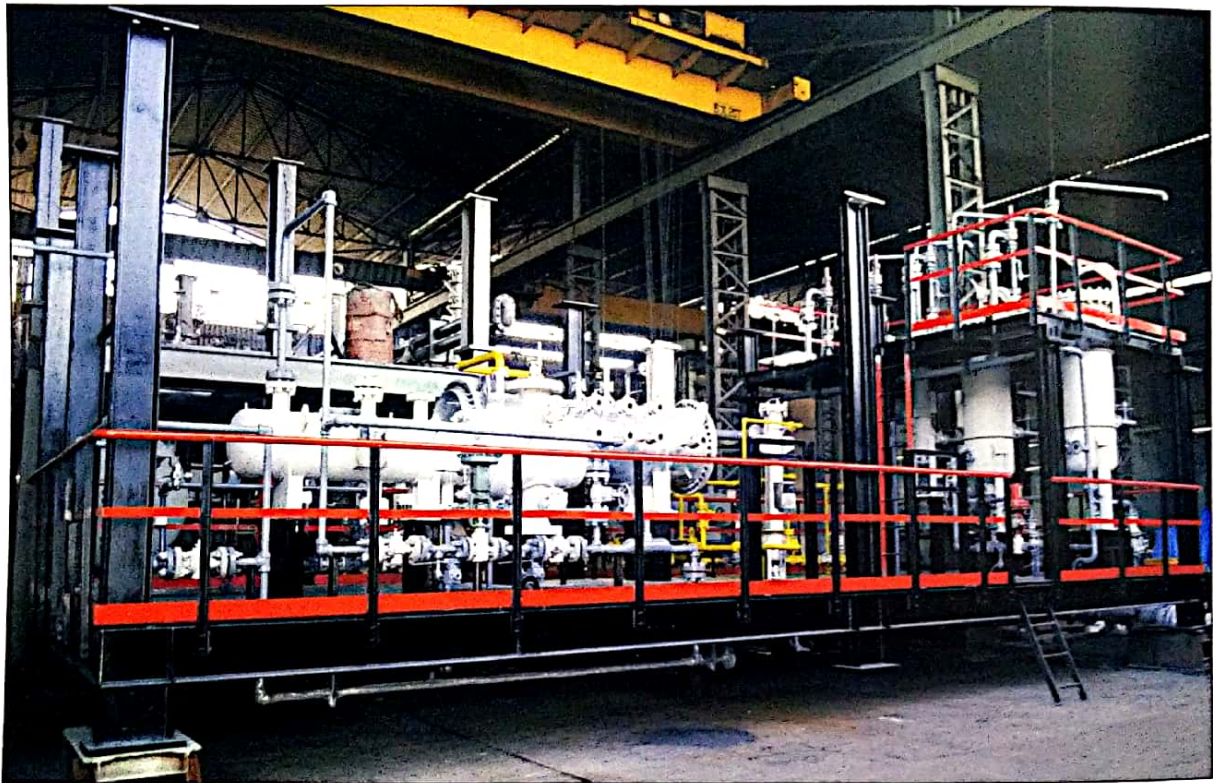
Works (I) : Plot No. 2, Sector 27A, Mathura Road, Faridabad

Tel : +91 129 7691 / 3244200 / 4043993 **Fax:** +91 129 2276921

Works (II) : D-2 / E - 13, GIDC, Dahej II, Distt. Bharuch (Gujarat)

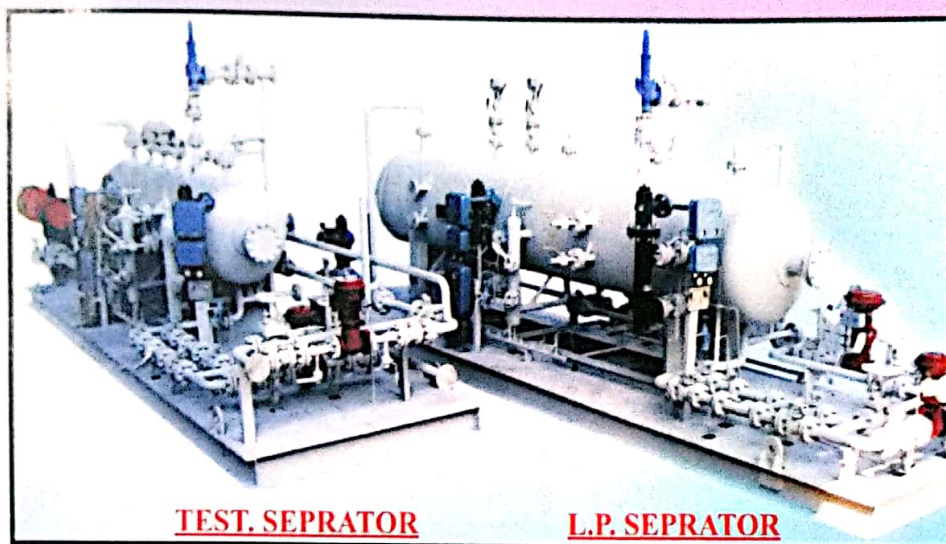
ABOUT THE COMPANY

INDCON PROJECTS & EQUIPMENT LTD., head quartered at New Delhi, India is a leading company in the Utility, Oil and Gas sectors committed in providing high quality products and services to its clients in the Domestic & International markets. From a small beginning in 1986 the Company has grown into a multi discipline Engineering Organization. The synergy in product profile and activities enable the company to supply Capital Equipments and undertake LSTK contracts. The company with its reputable track record of handling over 1000 contracts has seen meteoric rise in stature over the last three decades and is today streamlined and equipped to serve the specialized and most challenging applications of customers.



Our multiple manufacturing facilities hold numerous National and International Accreditations including ASME, ISO, IBR, CCOE/PESO. Certifications for Design, Engineering, Manufacture & Supply of ENERGY EFFICIENT SOLUTIONS for:

- | | |
|---|---------------------------------------|
| 1. Two/Three Phase Separators | 9. Slug Catchers |
| 2. Indirect Water Bath Heaters | 10. Three Phase Well Test Separators |
| 3. Gas Conditioning Skids | 11. Instrument and Utility Gas Skids |
| 4. Pressure Regulating and Metering Skids | 12. Acid Neutralisation Skids |
| 5. Knock Out Drums / Scrubbers | 13. Condensate Recovery Skids |
| 6. Filter Separators/Dry Gas Filters | 14. Gas Dehydration Skids |
| 7. Pig Launching / Receiving traps | 15. Chemical Injection & Dosing Skids |
| 8. Storage Tanks | 16. Fuel Forwarding Skids, etc. |



TWO/THREE PHASE SEPARATOR SKIDS

- * Primary equipment for Separation of Liquid & Gas (Two Phase) or Oil, Water & Gas (Three Phase)
- * Designed and manufactured as per API 12J
- * Internal inlet impingement Baffles, Wave Baffles, Flow Straightening Baffles, Weirs, Mist Eliminators & Vortex Breakers provided for effective separation
- * Equipment designed to allow sufficient retention period
- * Control & Instrumentation provided to measure Gas, Oil and Water flow rates, regulate the pressure and monitor the levels of Oil and Water may be provided
- * Automated Liquid (Oil & Water) removal system may be provided
- * Separator for large flow / pressure range are available
- * Compact, skid mounted system
- * Internal coating for protection and extended vessel life may be provided

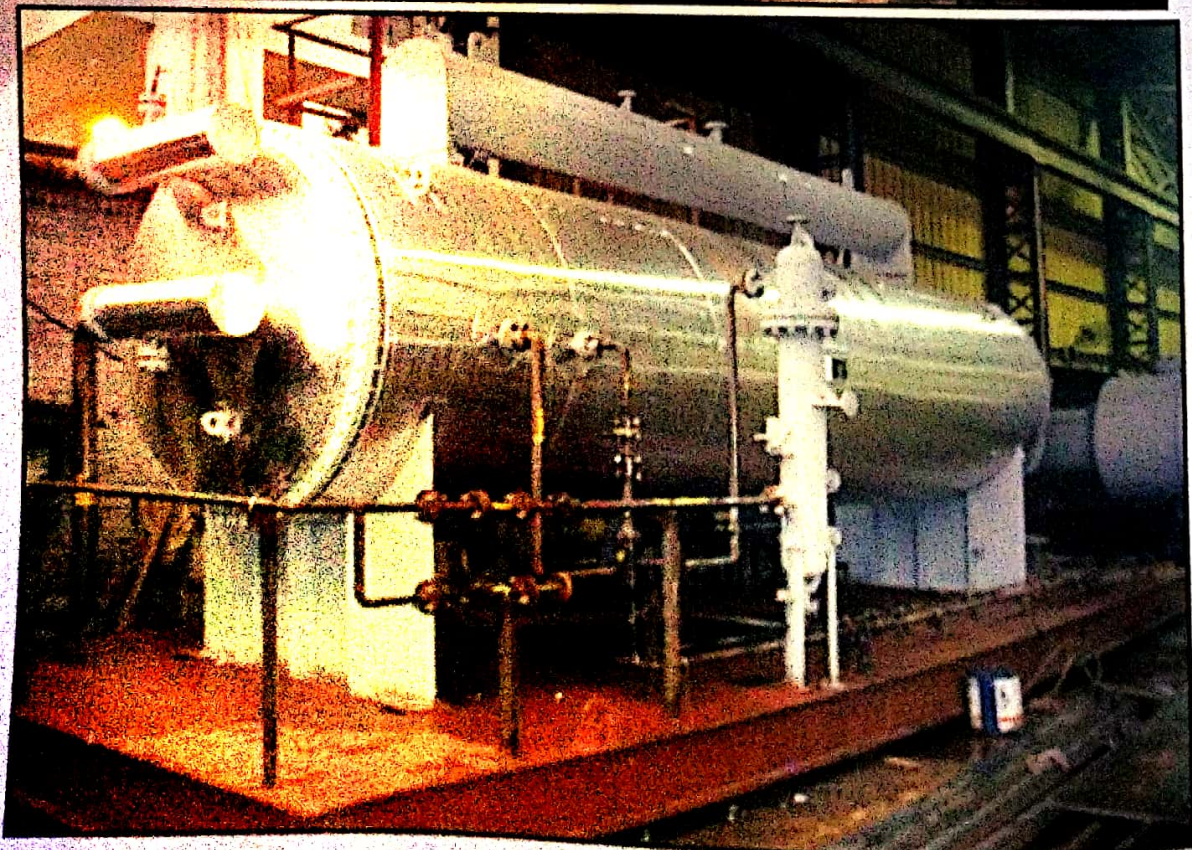
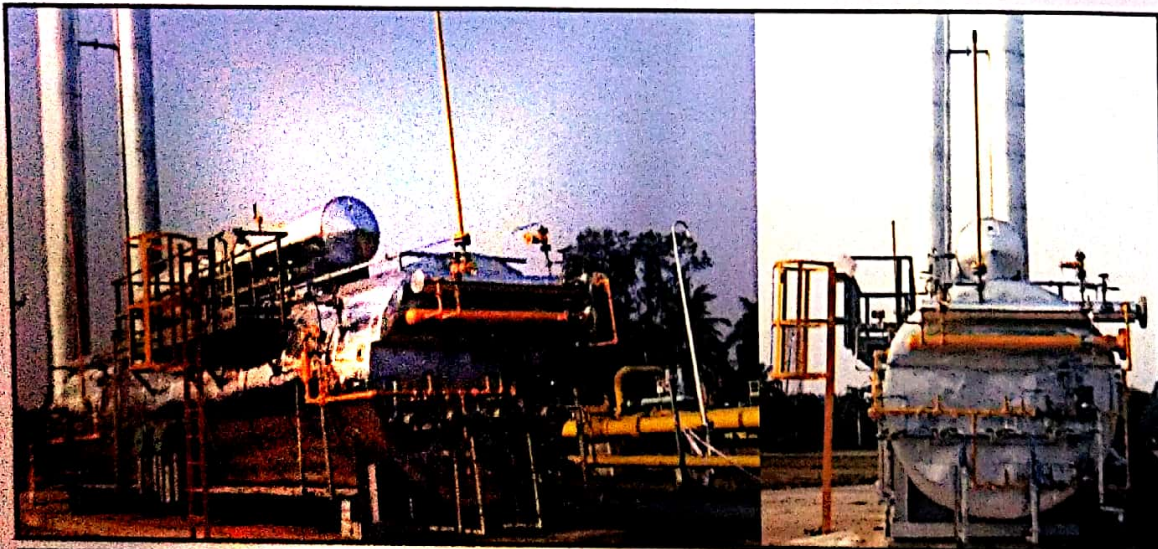


SLUG CATCHER :

- * The function of the Slug Catcher is the separation of Two phase flow
- * When the flow comes to the vessel inlet, the first separation occurs between the Gas that flows in the vessel and the liquids that go straight to the end section of the pipeline where it is discharged by a level control valve
- * The Gas phase flows through the vessel and the demisters where the remaining entrained liquids are separated to the bottom of the vessel and returned into the pipeline section (liquid section)
- * Any excess gas retained in the liquid section is returned to the vessel with the equalizer line
- * The demister space may be divided into multi equivalent sections with separate Gas outlets and washing devices.
- * HARP type Slug Catcher separator may be supplied for large liquid holding / handling.

INDIRECT WATER BATH HEATER

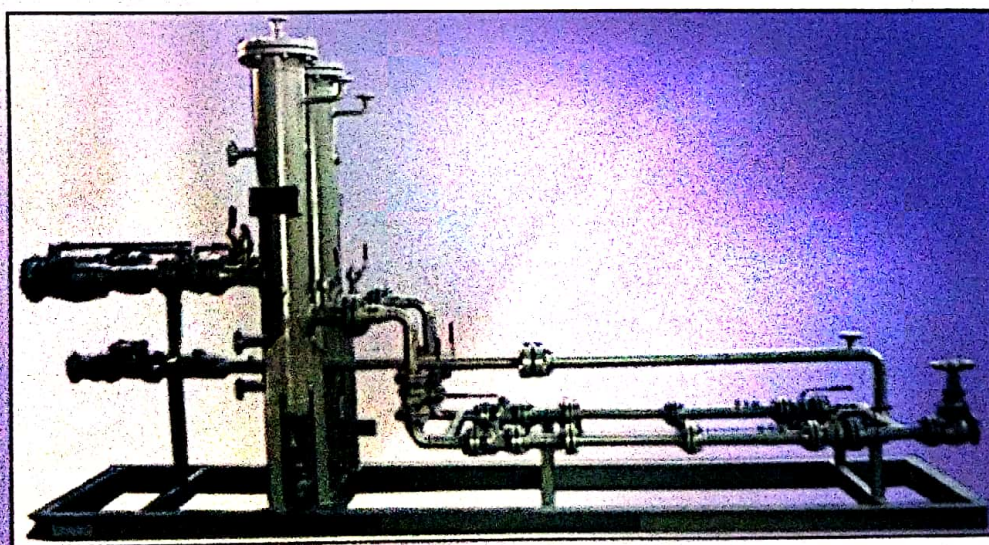
- * Gas Fired Indirect Bath Heaters designed in compliance to API 12 K specifications.
- * Heaters available for Compressed Natural Gas, LPG Vaporizer, Crude Oil Heating
- * Precise temperature control of process fluid are provided.
- * Removable single or double fire tube design are provided.
- * Removable process heating coil for ease of maintenance
- * Burner system complete with pilots and main burners, fuel gas train, spark igniter with transformer, BMS, PLC are provided
- * Flame arresters at burner air intake and stack top are provided
- * Fire tube for large heating capacity upto 15 Million BTU/4500KW/Hr are available
- * High heating efficiency upto 90% are available
- * Low stack vent temp. below 200 Deg. C
- * Low pressure drop in the process coil
- * Expansion tank for Bath Water loss control are provided





GAS CONDITIONING SKID

- * Ensures supply of Dry and Dust Free Gas
- * Generally comprises of a 1 x 100 % Knock Out Drum and 2 x 100 % Filter Separators together with Gas heater (as per service requirement) complete with interconnecting piping, valves, instrumentations, electrical and PLC based control panels for unattended smooth operation
- * Separation and removal of liquid from the Gas stream
- * Compact skid mounted system to facilitate easy access to all valves, instruments and filter elements
- * Condensate tanks and vent stack also provided
- * Stainless Steel piping used downstream of filter separation system to ensure clean gas
- * Instrument and Utility Gas Conditioning skids are available

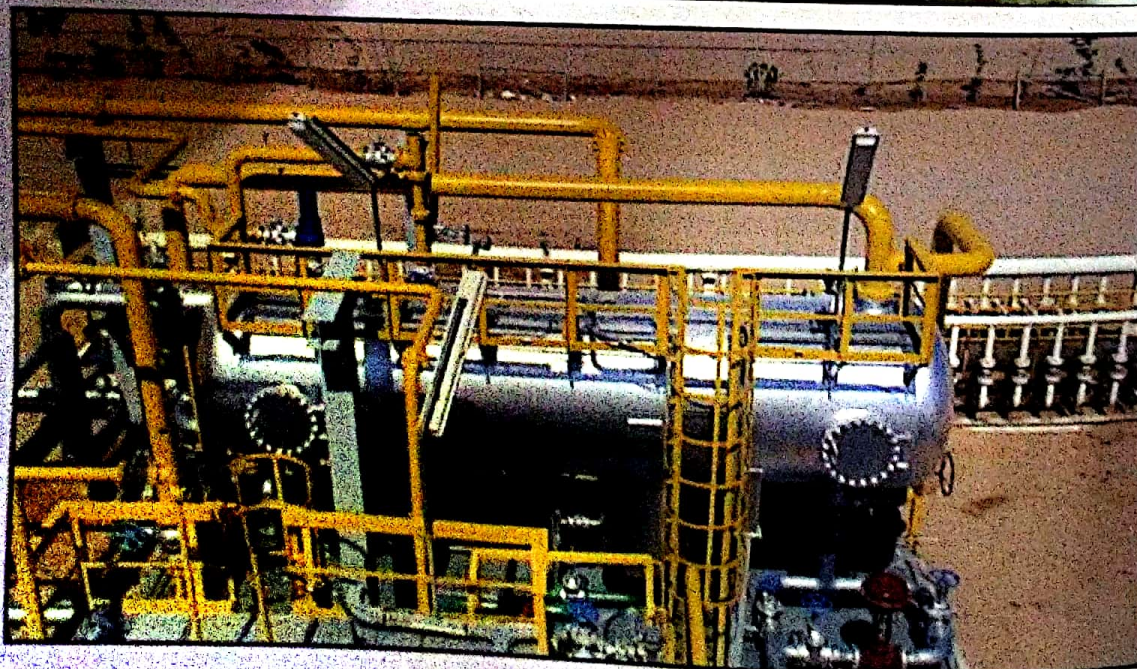
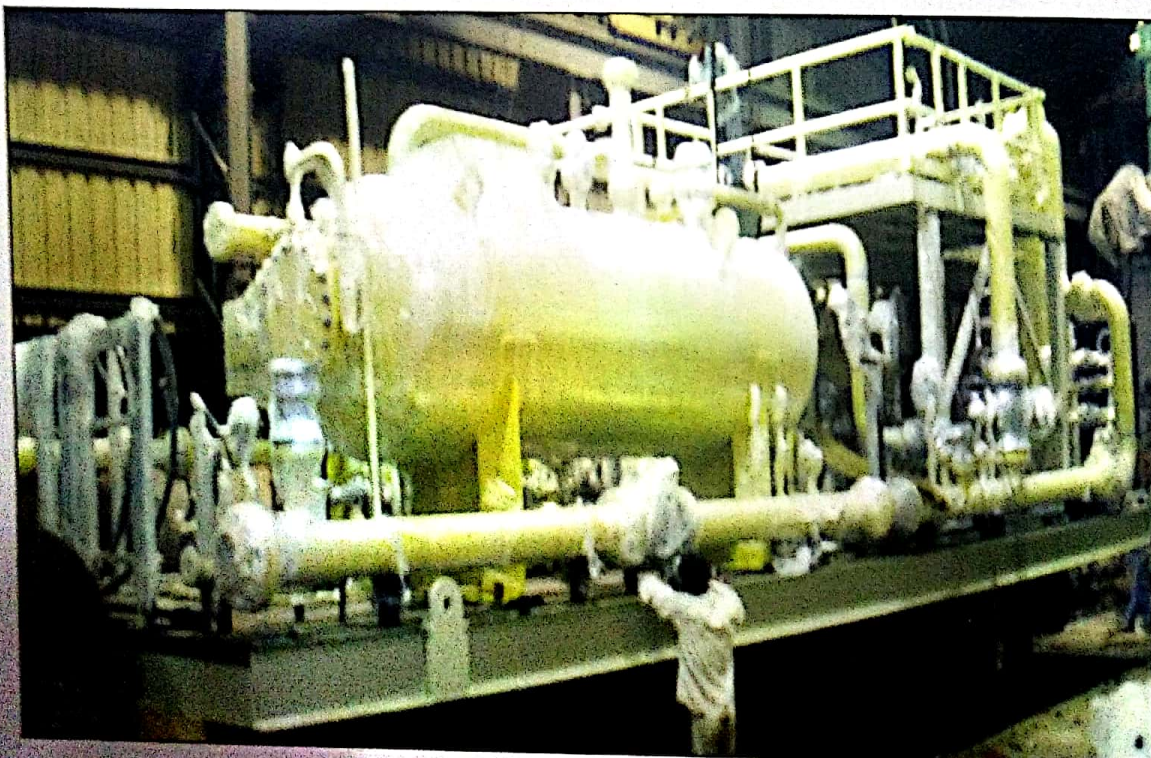


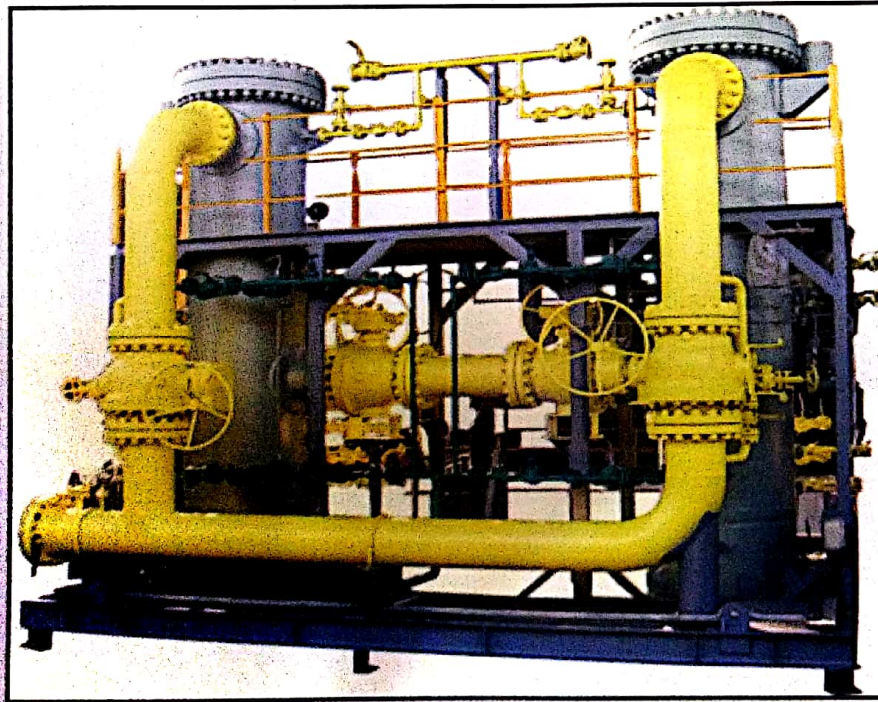
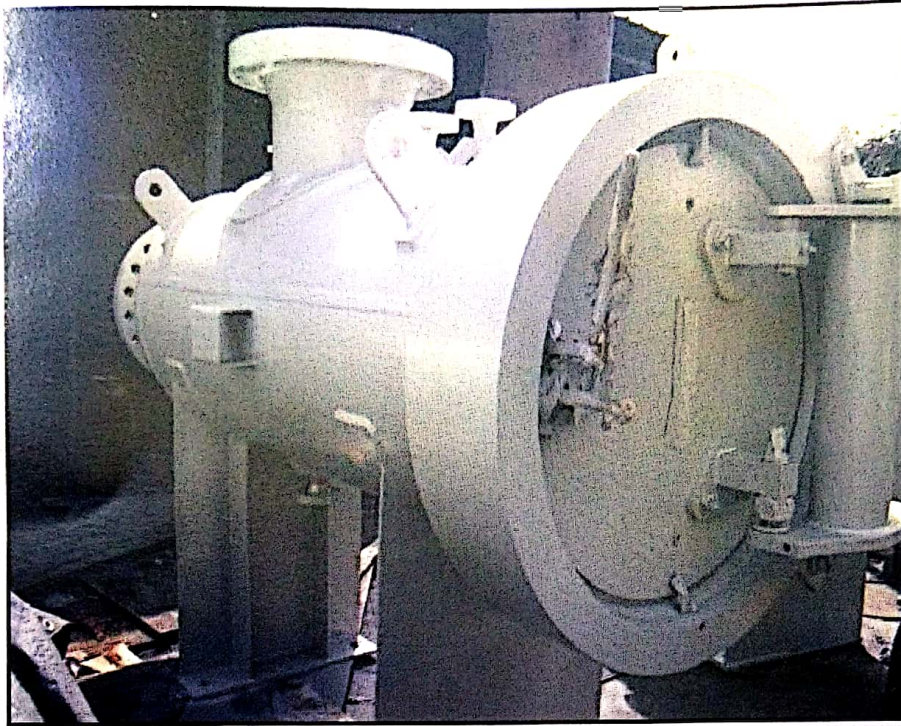
GAS PRESSURE REGULATING AND METERING SKIDS

- * As per client's requirements, Pressure Regulating and Metering system are provided as a part of the Gas Conditioning System or separately.
- * Compact, skid mounted Gas Metering Stations
- * Reliable and proven equipment like pressure regulator, slam shut valves, flow meter and flow totalizers are used
- * High accuracy in Pressure Regulation as well as in Flow measurement

KNOCKOUT DRUMS / SCRUBBERS

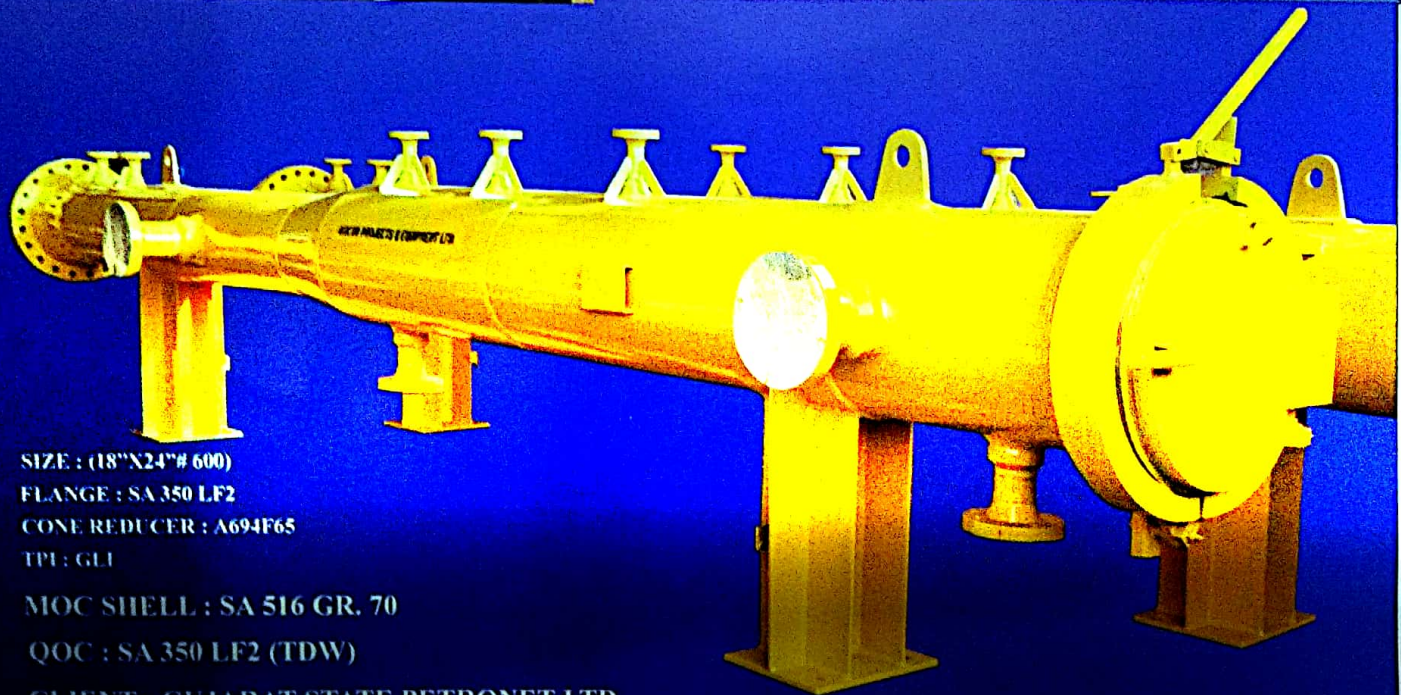
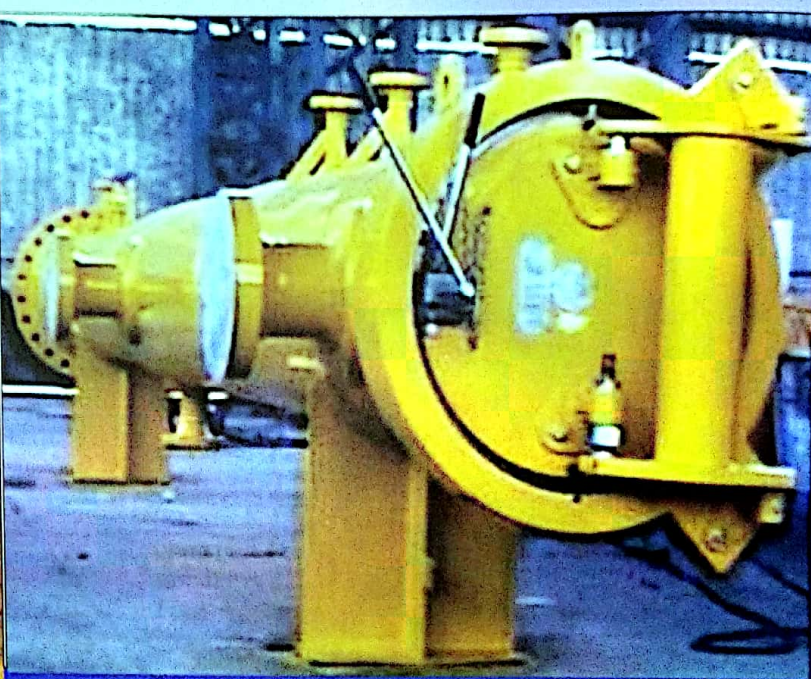
- * Used for solid/liquid separation from Gas Stream
- * Removes solid and liquid particle sizes larger than 10 microns with 99.9 % efficiency
- * Range and Combination of internals may be provided to improve the liquid separation.
- * Prevents re-entrainment of separated particles
- * Low pressure drop across skid
- * Large liquid holding volume may be provided.
- * Large Flow and Pressure range may be provided.
- * Provision for automated liquid level monitoring and liquid removal
- * Internal coating may be provided for protection & extended vessel life





FILTER SEPARATORS / DRY GAS FILTERS

- * For removal of liquid / solid particles down to 1 micron sizes with 99.9 % efficiency
- * Horizontal / Vertical design may be provided.
- * High performance, proven make, coalescing type glass fiber elements used in primary section
- * Secondary section provided with efficient impingement separators or mist eliminators to remove coalesced liquid
- * In Horizontal Filter Separator, down comers from primary and secondary sections pass all liquid to sump and prevent re-entrainments
- * Large liquid collection volumes holding may be provided.
- * Equipment provided with Quick Opening Closures for quick access to filter elements
- * Provision for automated liquid level monitoring and liquid removal



SIZE : (18"N24"X 600)

FLANGE : SA 350 LF2

CONE REDUCER : A694F65

TPI : GLI

MOC SHELL : SA 516 GR. 70

QOC : SA 350 LF2 (TDW)

CLIENT : GUJARAT STATE PETRONET LTD.

YEAR OF FABRICATION : 2013

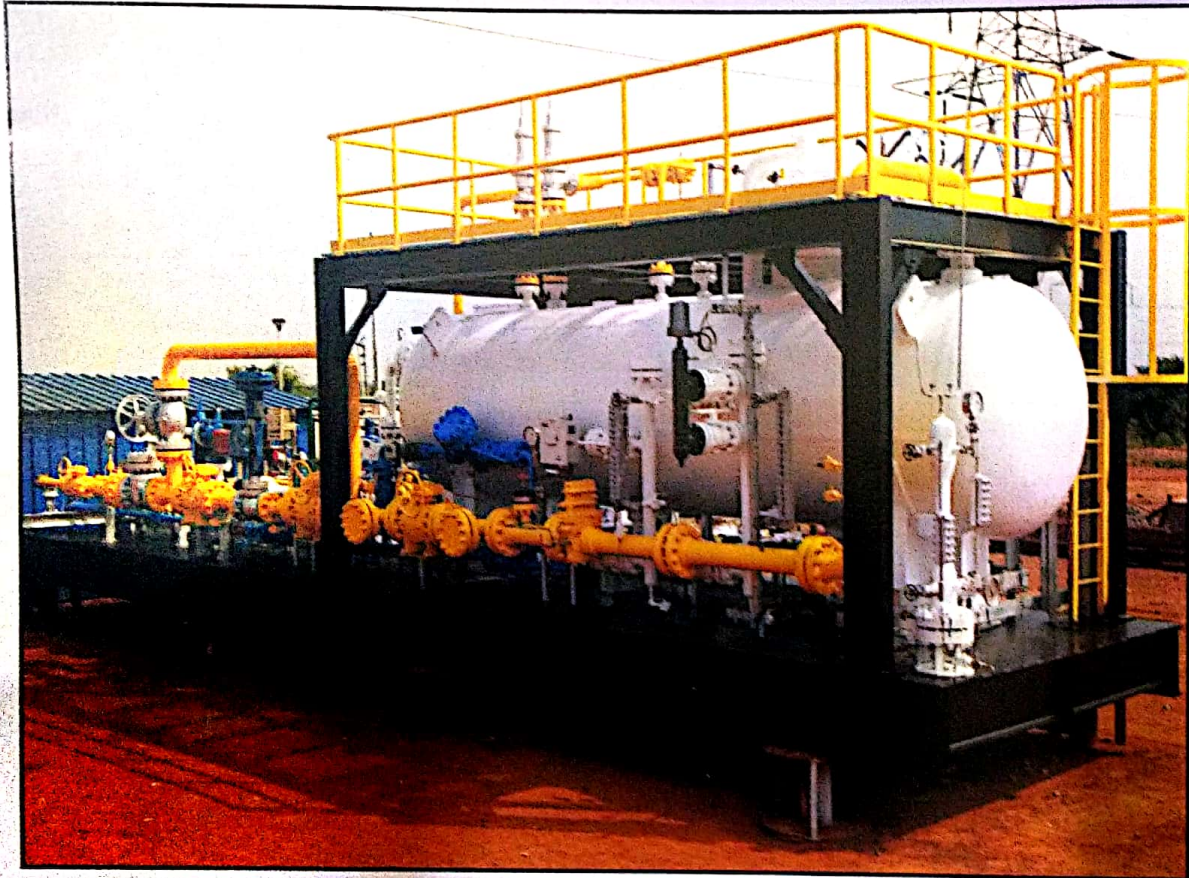
PIG LAUNCHING / RECEIVING TRAPS

- * Design and manufacture as per ASME B 31.3, B 31.4, B 31.8 and SHELL-DEP Guidelines
- * Supply of Scraper (Pig) Traps with Quick Opening Closure of Imported / Indcon make
- * Quick Opening Closure provided with Pressure Warning Device and Mechanical Interlock System
- * Traps capable of handling specific type and number of Pigs. Intelligent Pig Traps may be provided
- * Material of construction is Carbon Steel or Stainless steel as required including NACE specification
- * Flow Tees and Barred Tees may be provided.
- * Anti-spark Pig receiving trays may be provided.
- * Pig Signaller Intrusive / Non Intrusive type may be provided.
- * Pig Launching Pins for Pig Loading System may be provided.
- * Jib Crane for Handling for Pigs may be supplied.



STORAGE TANKS :

- ★ Design, Engineering, Procurement and Fabrication of above ground Steel Storage tanks with complete in-house design facility for Floating, Cone and Dome Roof tanks as per API 650
- ★ Supply includes Tank protection systems like fire protection, rim seal fire protection and cathodic protection systems
- ★ Procurement and supply of Tank Accessories, side entry mixers, radar gauges, level instruments and other instruments as per engineering requirement
- ★ Technical support and assistance provided by trained personnel during Erection and Commissioning
- ★ Crude oil storage tanks are provided with heating coils and mixers
- ★ Lube oil and Fuel oil tanks provided with outflow immersion heaters, thermal insulation and electric heat tracing cables etc.



THREE PHASE WELL TEST SEPARATOR:

APPLICATIONS :

- * Offshore and Land Operations
- * Well Cleanups
- * Early – Production Facilities
- * Drillstem Testing
- * Production / Well Testing

FEATURES, ADVANTAGES AND BENEFITS:

- * Pressure, Temperature, Level & other critical parameters can be sampled through ports available on inlet & outlet lines.
- * Full Bore By-pass Manifold with isolation valves enables routing of inlet effluent to Gas, Oil and Water outlets
- * Check valve fitted to vessel inlet nozzle prevents back flow.
- * Configuration and Modular Design of internal components provide ease of maintenance and use of standard manway
- * Flanged adapter spools provided to allow retrofit of alternative liquid meters
- * Internal coating for protection & extended vessel life may be provided
- * Four point lifting sling and integral forklift pockets are provided for ease of handling and movement
- * Skid mounted tool box containing ancillary equipment are provided to improve operational efficiency

REFERENCES



CERTIFICATE OF AUTHORIZATION



This certificate certifies the named company as authorized to use the indicated symbol of the American Society of Mechanical Engineers (ASME) for the scope of activity shown below in accordance with the applicable rules of the ASME Boiler and Pressure Vessel Code. The use of the Code symbol and the authority granted by this Certificate of Authorization are subject to the provisions of the agreement set forth in the application. Any construction stamped with this symbol shall have been built strictly in accordance with the provisions of the ASME Boiler and Pressure Vessel Code.

COMPANY: Indcon Projects & Equipment Limited
Plot G-1, Block B-1
Moham Co-Operative Industrial Estate
Mathura Road
New Delhi, 110044
India

SCOPE: Manufacture of pressure vessels at the above location and field sites controlled by the above location (This authorization does not cover impregnated graphite)


AUTHORIZED: June 6, 2011
EXPIRES: June 6, 2014
CERTIFICATE NUMBER: 41,215


Vice President
Conformity Assessment


Director, Accreditation and Certification

The American Society of Mechanical Engineers

CERTIFICATE OF AUTHORIZATION




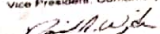
This named company is authorized by the American Society of Mechanical Engineers (ASME) for the scope of activity shown below in accordance with the applicable rules of the ASME Boiler and Pressure Vessel Code. The use of the certification mark and the authority granted by this Certificate of Authorization are subject to the provisions of the agreement set forth in the application. Any construction stamped with this certification mark shall have been built strictly in accordance with the provisions of the ASME Boiler and Pressure Vessel Code.

COMPANY: Indcon Projects & Equipment Limited
Plot No. 2, Sector - 27A, Mathura Road
Faridabad - 121003, Haryana
India

SCOPE: Manufacture of pressure vessels at the above location and field sites controlled by the above location (This authorization does not cover impregnated graphite)

AUTHORIZED: July 6, 2012
EXPIRES: May 11, 2015
CERTIFICATE NUMBER: 38,505


Vice President, Conformity Assessment


Director, Conformity Assessment

The American Society of Mechanical Engineers

**THE NATIONAL BOARD
OF
BOILER & PRESSURE VESSEL INSPECTORS**

Certificate of Authorization



This is to certify that

INDCON PROJECTS & EQUIPMENT LIMITED
PLOT G-1, BLOCK B-1
MOHAN CO-OPERATIVE INDUSTRIAL ESTATE
MATHURA ROAD
NEW DELHI, 110044
INDIA

Is authorized to apply the "NB" mark and register boilers, pressure vessels, or other pressure retaining items with the National Board in accordance with its provisions.

The scope of Authorization is limited to items manufactured in accordance with:

ASME Stamp(s): U

ISSUE DATE: July 7, 2011
EXPIRATION DATE: June 6, 2014

Executive Director 

NB JCI Rev. 4

**THE NATIONAL BOARD
OF
BOILER & PRESSURE VESSEL INSPECTORS**

Certificate of Authorization



This is to certify that

INDCON PROJECTS & EQUIPMENT LIMITED
PLOT G1, BLOCK - B-1
MOHAN CO-OPERATIVE INDUSTRIAL ESTATE
MATHURA ROAD
NEW DELHI, 110044
INDIA

Is authorized to use the "NB" SYMBOL in accordance with the provisions of the National Board.

The scope of Authorization is limited as follows:

METALLIC REPAIRS AND/OR ALTERATIONS AT THE ABOVE LOCATION AND EXTENDED FOR FIELD REPAIRS AND/OR ALTERATIONS CONTROLLED BY THIS LOCATION

CERTIFICATE NUMBER: B-4361
ISSUE DATE: JUNE 15, 2011
EXPIRATION DATE: JANUARY 10, 2014

Executive Director 

NB JCI Rev. 4



INDCON PROJECTS & EQUIPMENT LTD.

Office : PLOT G-1, BLOCK B-1, MOHAN CO-OPERATIVE INDUSTRIAL ESTATE,
MATHURA ROAD, NEW DELHI - 110 004

Tel : 91 11 26959570/2699125557 Fax: +91 11 26959603 E Mail : indcon@indconprojects.com

Mumbai Office : B-3, J B Nagar, Andheri (E), Mumbai

Tel : 91 22 28321725 / 28224879 Fax : 91 11 28217404 Mail : indconmumbai@gmail.com

Works (I) : Plot No. 2, Sector 27A, Mathura Road, Faridabad

Tel : +91 129 7691 / 3244200 / 4043993 Fax: +91 129 2276921

Works (II) : D-2 / E - 13, GIDC, Dahej II, Distt. Bharuch (Gujarat)